

Figure 1: Index of hard coal production, 1953 = 100, ECSC6 and Belgium, 1953-1976. Source: EC Commission (1977, Table 30).



Figure 2: Index of crude steel production, 1974 = 100, ECSC6, 1953-1988.
 Source: Mitchell (1992, Table D9).

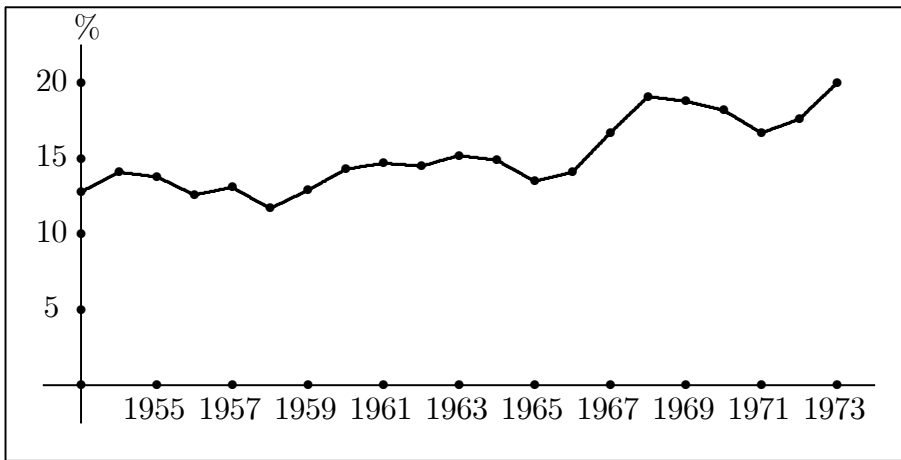


Figure 3: ECSC6 internal trade in coal, patent fuel, and coke, as per cent of coal production, 1953-197 Source: EC Commission (1977, Table 35).